



TOY HAULER

FAMILY + TOY HAULER
VAN

FULL OFF ROAD
EAST, WEST BED

CHASSIS

- EXTENDED A FRAME
- 6 INCH CHASSIS
- TANDEM AXLE
- JOCKEY WHEEL
- FULL OFF ROAD CRUISEMASTER XT SUSPENSION
- SUPERGAL OFF-ROAD CHASSIS
- MUD/ALL- TERRAIN TYRES ON 16' CUSTOM WHEELS (SPARE WHEEL INCLUDED)
- CRUISEMASTER DO35 V3 COUPLING WITH INTEGRATED HANDBRAKE
- DROP-DOWN STABILISER JACKS
- GALVANISED 3-ARM BUMPER BAR
- WITH SPARE WHEEL
- STEEL ENTRY STEP
- BREAKAWAY SAFETY SYSTEM
- ELECTRIC BRAKES TO ALL WHEELS

EXTERIOR

- MARINE-GRADE SMOOTH FINISH
- COMPOSITE PANELS
- BOUTIQUE SIGNATURE ONE PIECE FIBERGLASS ROOF
- EASY TO USE PREMIUM AWNING
- HEAVY DUTY MUDFLAPS
- HIGH CHECKER PLATE BODY ARMOR & WHEEL SPATS
- GRAB HANDLES
- CRIMSAFE TRIPLE-LOCK ENTRY DOOR WITH ALUMINIUM SECURITY MESH & BLIND
- TINTED SLEEK FLAT-PANE DOUBLE GLAZED WINDOWS
- BOUTIQUE VINYL DECAL KIT
- EXTERNAL ENTERTAINMENT PACK
- TV POINT & EXTERNAL SPEAKERS
- BUBBLE LIGHT GRAB HANDLE
- PICNIC TABLE WITH LED LIGHTING
- PULL-OUT STEP
- EXTRA LARGE TOOLBOX WITH DOUBLE SIDED SLIDE-OUT STORAGE
- SAFETY DAVE REVERSE CAMERA WITH MONITOR

INTERNAL

- UNIQUELY DESIGNED ERGONOMIC FLOORPLAN. ALTERNATIVE LAYOUTS AVAILABLE
- BOUTIQUE SIGNATURE ONE PIECE HONEYCOMB CORE WATERPROOF FLOOR
- UPGRADED CONTEMPORARY MATTE BLACK SINKS, TAPS, SHOWER & HARDWARE PACK
- FILTERED WATER
- GAS STRUT OVERHEAD CUPBOARDS & SOFT CLOSE DRAWERS
- PREMIUM RANGE LAMINATE
- BENCH TOPS
- EUROPEAN-MADE VINYL FLOORING (HUGE RANGE OF COLOURS/STYLES AVAILABLE)
- MIDGEE PROOF MESH & BLOCK OUT BLINDS
- MODERN & CONTEMPORARY FURNITURE WITH BOUTIQUE CARAVANS PREMIUM CABINETRY
- RESIDENTIAL GRADE PIANO HINGE ASSEMBLY
- PREMIUM LOUNGE SEATING
- CEILING MOUNT SPEAKERS
- BEDROOM PIGEONHOLES WITH ONE-X USB POWERPOINTS
- BEDROOM & BUNK FANS
- DOUBLE GLAZED WINDOWS
- REVERSE CYCLE FANS IN SHOWER/ENSUITE
- 2X SKYLIGHTS
- QUEEN SIZE PILLOW TOP INNERSPRING MATTRESS
- SOFT PANEL TRIPLE BUNK BEDS
- SAFETY PACK: SMOKE ALARMS &
- FIRE EXTINGUISHER

APPLIANCES

- TOP OF THE RANGE BUSHMAN 194L COMPRESSOR FRIDGE
- SWIFT FULL OVEN/GRILLER/ COOKTOP
- SLIMLINE RANGEHOOD
- 25LTR MICROWAVE
- REVERSE CYCLE HEATING & COOLING
- 3.2KG FRONTLOAD WASHING MACHINE
- PREMIUM SOUND PACKAGE
- BLUETOOTH/USB/CD/RADIO WITH INTERNAL & EXTERNAL SPEAKERS

ELECTRICAL

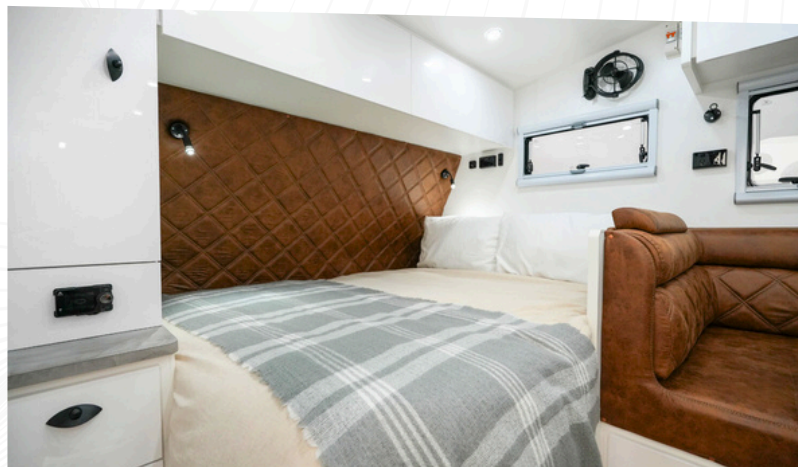
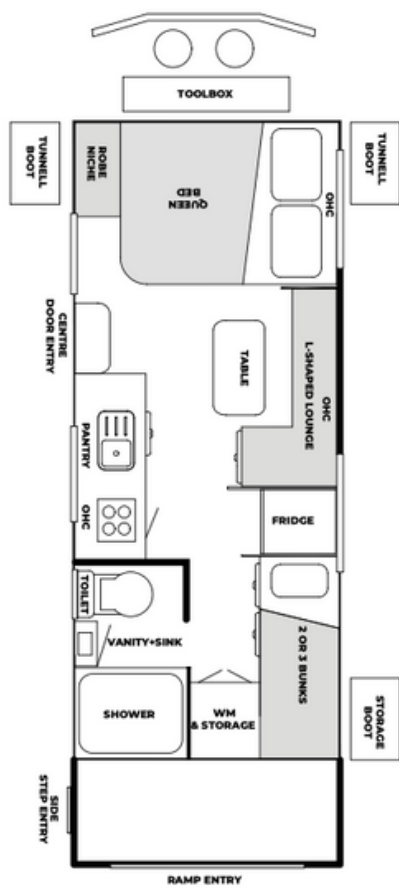
- COMPLETE LED LIGHTS
- DOWNLIGHTS
- READING LIGHTS
- TUNNEL BOOT LIGHTS
- STRIP LIGHTING
- ANTI-INSECT ANNEX LIGHTS
- FRONT & REAR WORK LIGHTS WITH EXTERNAL SWITCH
- 12 PIN PLUG WITH ANDERSON PLUG
- ONE-X USS POWERPOINT THROUGHOUT DOUBLE POLE POWERPOINTS
- EXTERNAL POWER POINT
- ARIZON - VICTRON ENERGY (MICRO BOARD)
- BM PRO TREK3 DISPLAY
- 2X 200W SOLAR PANELS
- 2X 120AH AGM BATTERIES
- WINEGARD ANTENNA

PLUMBING

- SWIFT GAS AND ELECTRIC HOW WATER SYSTEM THETFORD CERAMIC TOILET
- ONE PIECE FIBERGLASS SHOWER
- 2X 95LTR FRESH WATER TANKS
- LX 95LTR GREY WATER TANK
- DUAL GAS BOTTLES
- WATER TAP ON A-FRAME

WEIGHT AND DIMENSIONS

TARE: 2750 KG
BALL WEIGHT: 235KG
ATM: 3500KG



**FAMILY + TOY HAULER
VAN**

**FULL OFF ROAD
EAST, WEST BED**